

7) One day, 326 visitors visited Khalifa Tower. The following day, there were 490 visitors.



How many people visited Khalifa Tower over the two days? Round to the nearest hundred.

- a) 800 b) 700 c) 900

8) Fatma read 93 pages from her book.



Write the number sentence that show number of pages that she didn't read.

- a) $205 - 93$ b) $250 + 93$ c) $250 - 93$

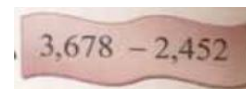
9) An aquarium has 285 gold and black fish.

| Aquarium | Number of fish |
|------------|----------------|
| Gold fish | 195 |
| Black fish | ? |

What is the number of black fish in the aquarium?

- a) 90 b) 100 c) 480

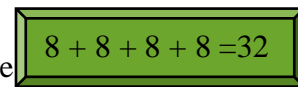
10) Which number gives the estimated difference for the problem



Rounded to the nearest ten?

- a) 1,200 b) 1,226 c) 1,230

11) Which number sentence is connected to this addition sentence



?

- a) $8 \times 3 = 24$ b) $8 \times 4 = 32$ c) $8 + 4 = 12$

12) Write a multiplication sentence to show equal rows.



a) $5 \times 2 = 10$

b) $3 \times 4 = 12$

c) $3 \times 5 = 15$

13) Which two number sentences that show commutative property of multiplication?

a) $2 \times 4 = 8$
 $8 \times 1 = 8$

b) $6 \times 4 = 24$
 $4 \times 6 = 24$

c) $3 + 7 = 10$
 $7 + 3 = 10$

14) In each box 9 apples. What is the total of apples in 4 boxes?

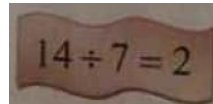


a) 27

b) 13

c) 36

15) What is the divisor in this division sentence



a) 2

b) 7

c) 14

16) Find the unknown $18 \div \square = 3$

a) 6

b) 7

c) 5

17) Laila baked 10 cakes for her and her friend. Each one of them got equal number of cakes.

Which number sentence that show this?



a) $10 - 2 = 8$

b) $10 \times 2 = 20$

c) $10 \div 2 = 5$

18) Mona had 30 tomatoes. She divided them in equal groups and in each group 5 tomatoes.

How many groups did she do?

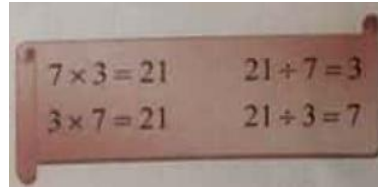


a) 6

b) 5

c) 7

19) Write the set of numbers for the fact family



a) 3, 7

b) 3, 7, 21

c) 3, 7, 10

20) Which pair shows inverse operations?

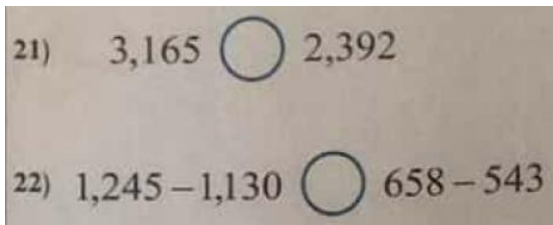
a) $6 \times 2 = 12$, $12 \div 3 = 4$

b) $6 \times 2 = 12$, $12 \div 12 = 1$

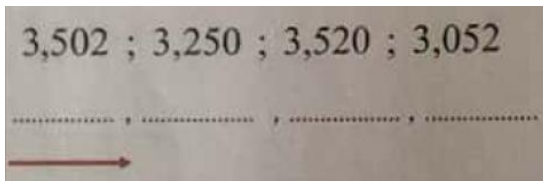
c) $6 \times 2 = 12$, $12 \div 6 = 2$

Question 2

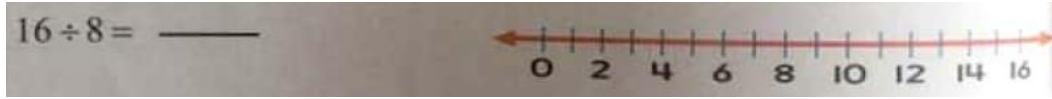
Compare. Use $>$, $<$, $=$.



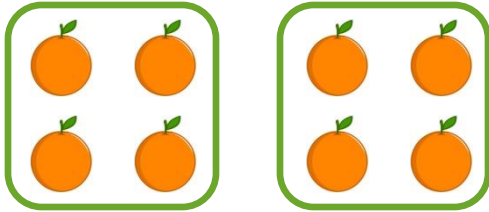
23) Order the numbers from least to greatest.



24) Use repeated subtraction to divide



25) Write the division sentence and multiplication sentence that are related.



$$\square \div \square = \square$$

$$\square \times \square = \square$$

26) There were 1,405 fans at a football game. The visiting team had 693 fans cheering.

Is it reasonable to say more than 2000 fans were at football game? Explain

.....
.....
.....



27) About how much less did Badr spend money to buy a bicycle than Hamad?

.....

Hamad 592 AED

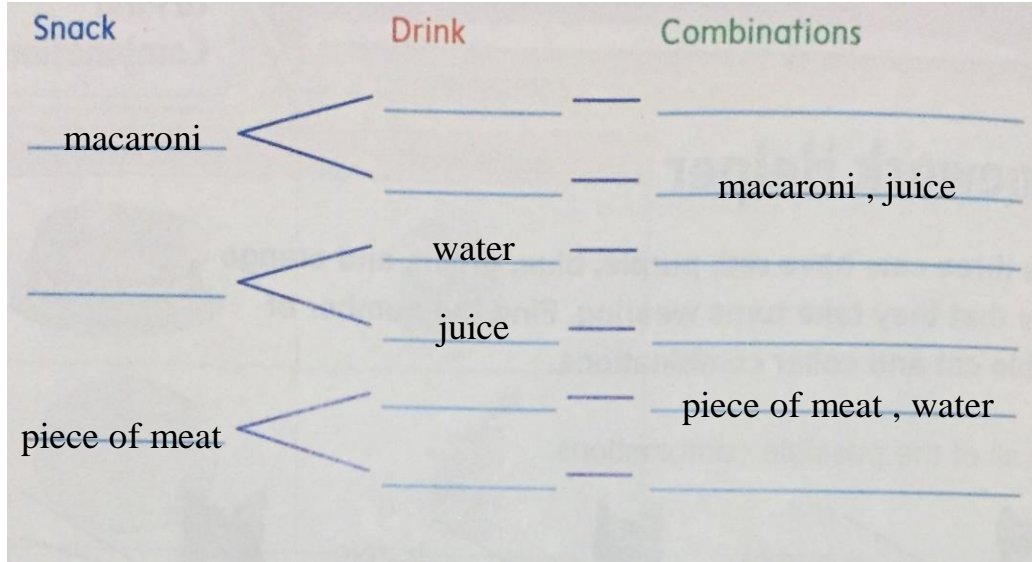
.....

Badr 543 AED

.....

28) For a meal, khawla can choose one snack and one drink.

Complete the tree diagram.



| meal | |
|---------------|-------|
| snack | drink |
| macaroni | water |
| pizza | juice |
| Piece of meat | |

29) How many different snack and drink combinations are in the table for a meal?

$$\square \times \square = \square \text{ combinations}$$